

www.heartjnl.com

Heart

Editorials

- Short stay angioplasty? **p 491**
Cardiovascular risk and ethnicity **p 493**
Assessing systolic function in practice **p 495**
Intravascular radiation **p 497**

Cardiovascular medicine

- Survival of patients with newly diagnosed heart failure **p 505**
Exercise tolerance in the relatives of patients with dilated cardiomyopathy **p 511**
Late outcome of infective endocarditis **p 525**

Interventional cardiology and surgery

- Slow pathway ablation **p 543**
Abrupt closure during PTCA: the effect of dipyridamole **p 551**
Short term observation after PTCA **p 557**

Clinical practice

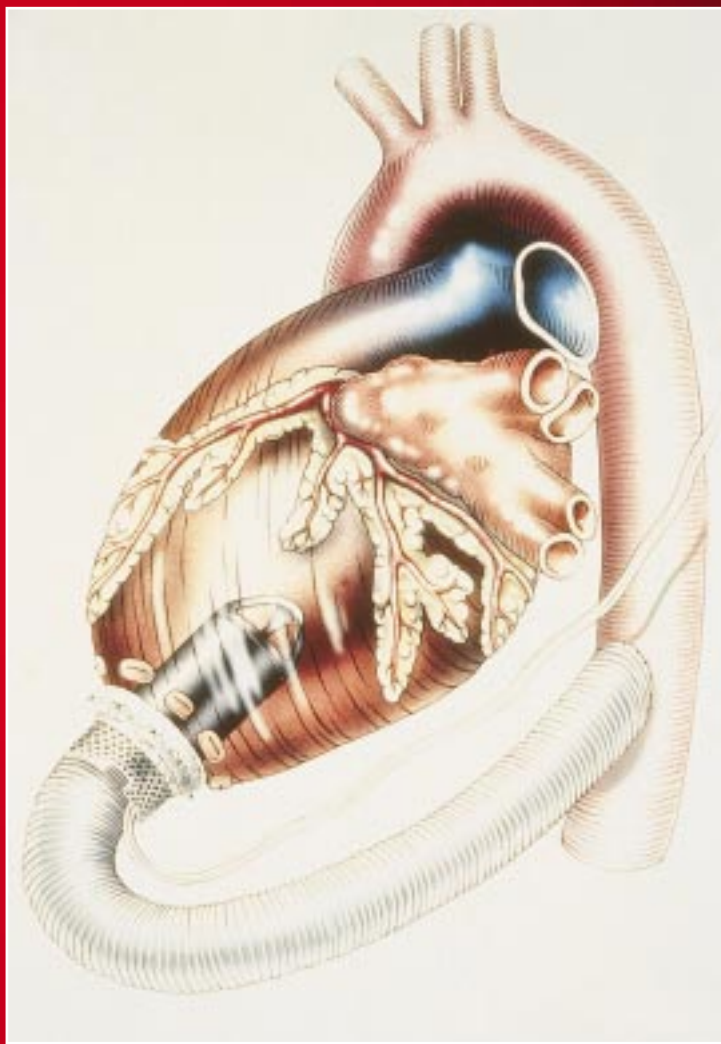
- The Newcastle protocol for tilt testing **p 564**

Basic research

- Biocompatibility of PDA closure devices **p 570**
ACE inhibition and Angiotensin production in the coronary circulation **p 574**
IL 6 and restenosis **p 578**

EDUCATION IN HEART

- ARVC: diagnosis, prognosis, and treatment **p 588**
Epidemiology, aetiology, and prognosis of heart failure **p 596**
Non-transplant surgery for heart failure **p 603**



See page 603

